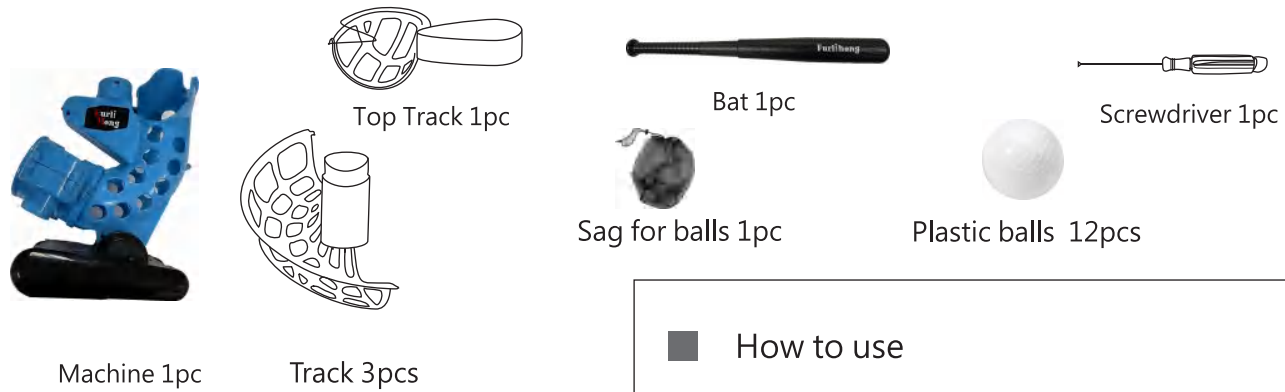


**Plastic baseballs pitching machine**

ZH-380BH

Please keep these instructions well

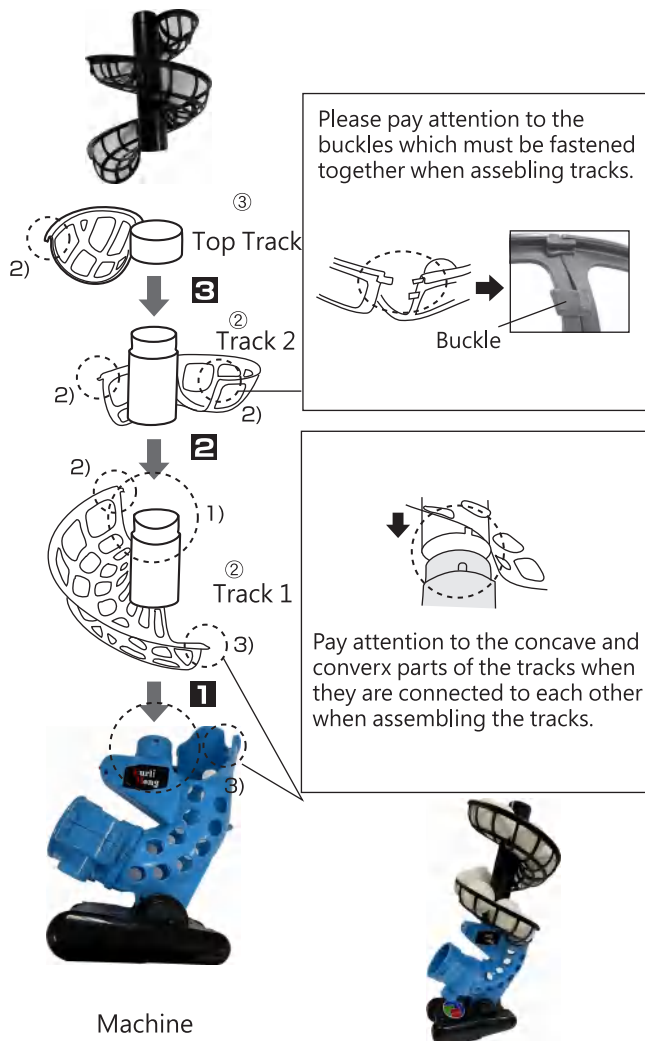
**Parts content** Please check all accessories are intact before assembly.



**Assembly Instructions**

Machine and tracks connection assembly required to be performed by adults

- 1** Connect Track 1 to the machine.
- 2** Connect track 2 to track 1 and so on if necessary.
- 3** Connect the Top Track



**How to use**



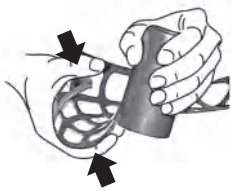
### ■ Battery Box

The battery box located at the bottom of machine

Please use screw driver to excute



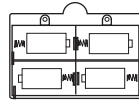
### Adjust track shape



Please squeeze gently the tracks if tracks out of shapes

### ■ How to assemble the batteries

- Please assemble the battery according the positive "+" and negative "-" .



- Please slide door cover back and tighten screws after assembling.
- Please use 4 X D batteries

Pull out the extending bat and fasten the connection in order to play .



### ⚠ Precautions for battery installation

- The battery installation must be performed by adult.
- Do not mix different types of batteries.
- Do not mix new and old batteries.
- Remove batteries if not used machine for a long time.
- Please install "+" and "-" properly.



### ⚠ NOTE

- Do not use in the rain , or near dust,salt spray.
- Do not wet the machine and battery box, AC adaptor.
- Ensure use the machine in wild space at least 13m.
- Do not stand in front of the ball launcher when in operation.
- Do not place heavy object above machine.
- Do not use this product for other purposes.
- Do not place machine near high temperature. Stay away from fire.
- Wipe and clean machine after finished training session.
- Children must play under adults supervision.
- Do not let face and hands approaching the launcher when in use.
- Do not disassemble this product, may cause malfunction.

MADE IN CHINA